


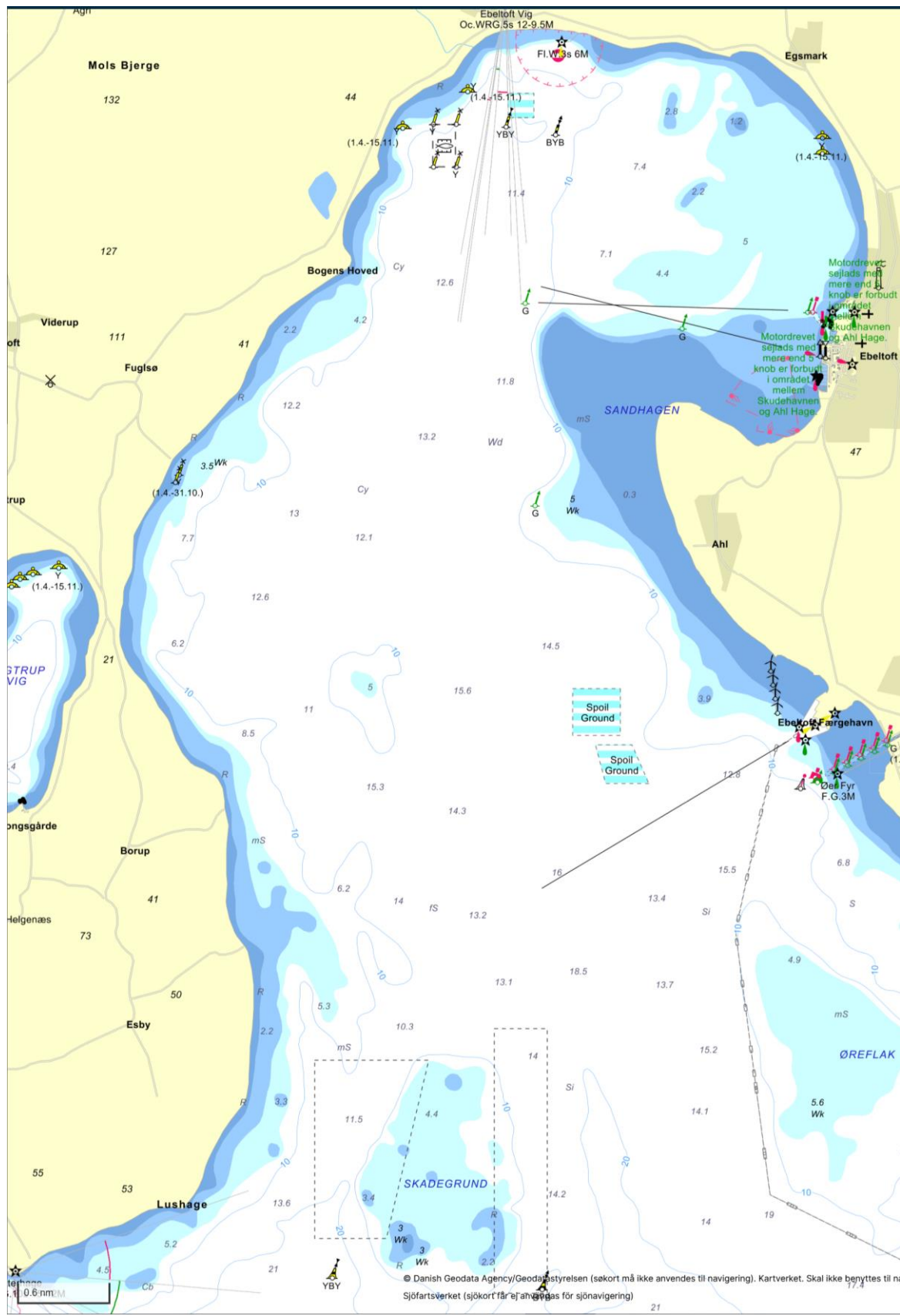


| Stage 3 of the DIF/DS/DBO Danish Championships 2024 for iQFOiL and Formula Foil Ebeltoft Windsurf Klub, October 5-6th 2024 | |
|--|---|
| 1 | RULES |
| 1.1 | The event is governed by the rules as defined in <i>The Racing Rules of Sailing</i> including the prescriptions of Nordic Sailing Federation and Danish Sailing Association. |
| 1.2 | Furthermore, the following applies: RRS Appendix B, except RRS B5 61.1 and B8.A8, RRS Appendix T, Statutes for the Danish Championships in Sailing, DBO Championship Rules for iQFOiL 2024 (DBO-CR-iQFOiL), DBO Equipment Rules for iQFOiL 2024 (DBO-ER-iQFOiL). |
| 2 | NOTICES TO COMPETITORS |
| 2.1 | Notices to competitors will be posted on the official notice board(s) located in the Danish Championships WhatsApp Group. |
| 3 | SIGNALS MADE ASHORE |
| 3.1 | Signals made ashore will be displayed at the official flagpole located by the club house at S.A. Jensens Vej 1, 8400 Ebeltoft. |

| | |
|------------|---|
| 4 | SCHEDULE |
| 4.1 | <p><u>Day 1:</u> 07.45 - 08.00: Late entry 08.00 - 09.30: Check-in 09.00: Intended discipline announced 09.30: Skippers' meeting. Course diagram(s) announced 10.30: Elimination table for slalom announced 11.00: 1st possible warning signal</p> <p><u>Day 2 and following days:</u> 08.30: Intended discipline announced. 09.00: Skippers' meeting. Course diagram(s) announced 09.30: Elimination table for slalom announced 10.00: 1st possible warning signal</p> <p><u>Last day:</u> After last race: Prize giving</p> |
| 5 | CLASS FLAGS |
| 5.1 | iQFOiL 7-8-9 (and Formula Foil):  |
| 6 | RACING AREAS |
| 6.1 | In Addendum A, a map of the general race area is shown. |
| 6.2 | For Slalom and Course Racing, the race area will be in Ebeltoft Vig, close to the club house, while keeping a minimum water depth of 1 m and as stable wind conditions as practically possible. |
| 6.3 | For Marathon, the race area can extend Sletterhage or Gåsehage. |
| 7 | THE COURSES |
| 7.1 | The diagrams in Addendum A show the courses, the order in which marks are to be passed, and the side on which each mark is to be left. |
| 7.2 | For iQFOiL Marathon, a bespoke course will be announced depending on wind conditions. |

| 8 | TARGET TIMES | | | | | | | | | | | | |
|----------------------|--|--------------------------------|-------------|---------------|----------------------|----|--------------------------------|---------------|-----|--------------------------------|-----------------|----|--------------------------------|
| 8.1 | <p>Time limits and target times [in minutes] are as follows:</p> <table border="0" data-bbox="373 327 1206 524"> <thead> <tr> <th data-bbox="373 327 746 365">Discipline</th> <th data-bbox="746 327 938 365">Target time</th> <th data-bbox="938 327 1447 365">Finish window</th> </tr> </thead> <tbody> <tr> <td data-bbox="373 376 746 414">iQFOiL Course Racing</td> <td data-bbox="746 376 938 414">16</td> <td data-bbox="938 376 1447 414">+100% of 1st board</td> </tr> <tr> <td data-bbox="373 425 746 463">iQFOiL Slalom</td> <td data-bbox="746 425 938 463">4-5</td> <td data-bbox="938 425 1447 463">+100% of 1st board</td> </tr> <tr> <td data-bbox="373 474 746 512">iQFOiL Marathon</td> <td data-bbox="746 474 938 512">60</td> <td data-bbox="938 474 1447 512">+100% of 1st board</td> </tr> </tbody> </table> <p>Failure to meet the target times will not be grounds for redress. This changes RRS 62.1(a).</p> | Discipline | Target time | Finish window | iQFOiL Course Racing | 16 | +100% of 1 st board | iQFOiL Slalom | 4-5 | +100% of 1 st board | iQFOiL Marathon | 60 | +100% of 1 st board |
| Discipline | Target time | Finish window | | | | | | | | | | | |
| iQFOiL Course Racing | 16 | +100% of 1 st board | | | | | | | | | | | |
| iQFOiL Slalom | 4-5 | +100% of 1 st board | | | | | | | | | | | |
| iQFOiL Marathon | 60 | +100% of 1 st board | | | | | | | | | | | |
| 9 | SAFETY REGULATIONS | | | | | | | | | | | | |
| 9.1 | Check-Out and Check-In: If instructed by the race committee, all sailors must check-out and check-in before and after the Marathon Race. The standard penalty applied for breaking this instruction will be 1 point for each of the relevant races. | | | | | | | | | | | | |
| 9.2 | If instructed by the race committee, all sailors must carry a cell phone for the Marathon Race. The standard penalty applied for breaking this instruction will be 1 point for each of the relevant races. | | | | | | | | | | | | |
| 9.3 | A boat that retires from a race shall notify the race committee as soon as possible. The standard penalty applied for breaking this instruction will be 1 point for the relevant race. | | | | | | | | | | | | |

ADDENDUM A RACING AREA



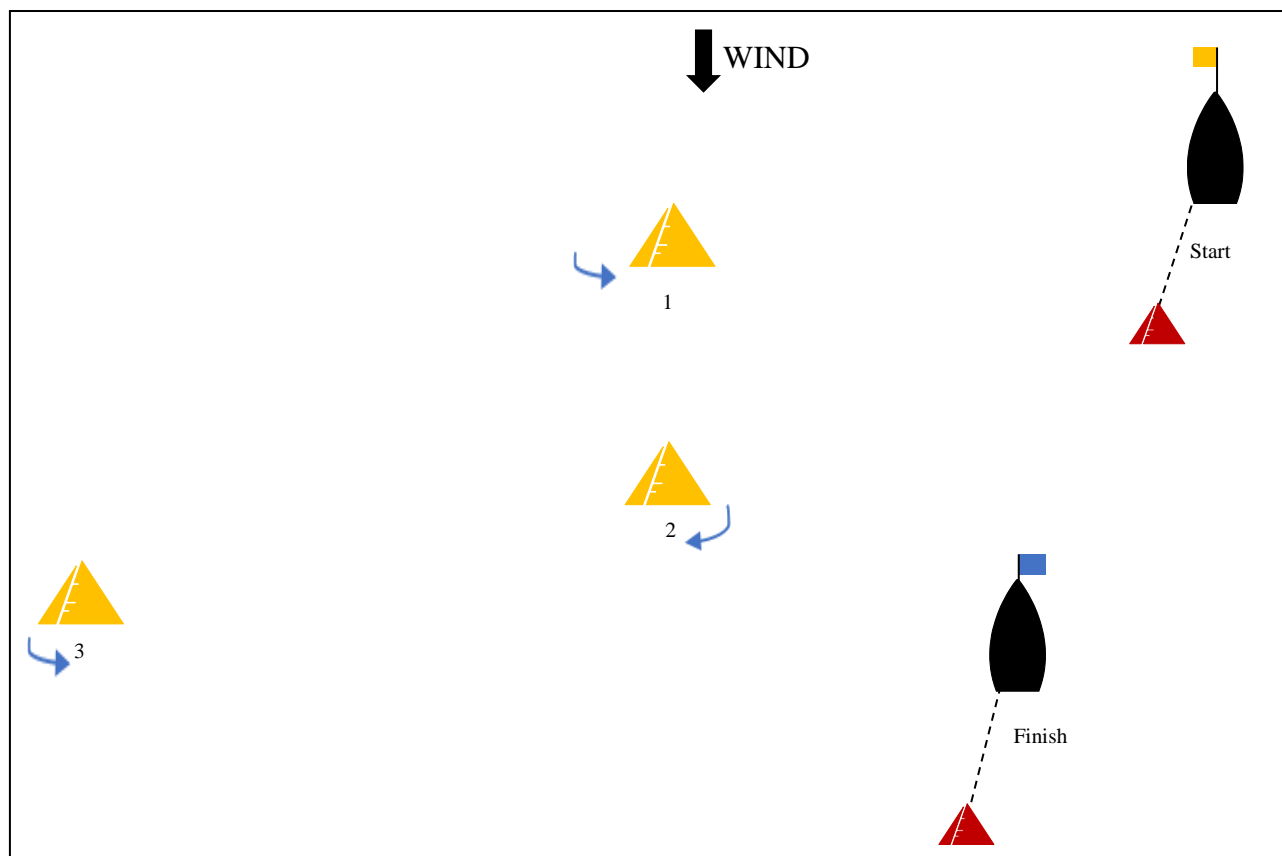
ADDENDUM B

COURSE DIAGRAMS

Expected angles and lengths available in the iQFOiL Class Race Management Guidelines.

SLALOM RACING SD3

(PREFERRED IN POWERED CONDITIONS)



The Start will be between a red pyramid and an orange flag on the start line vessel.

Marks 1, 2 and 3 yellow cylinders.

Marks 1 and 3 are kept to port.

Mark 2 is kept to starboard.

The Finish will be between a red pyramid and a blue flag on *either* the finish line vessel or a buoy.

Rounding order:

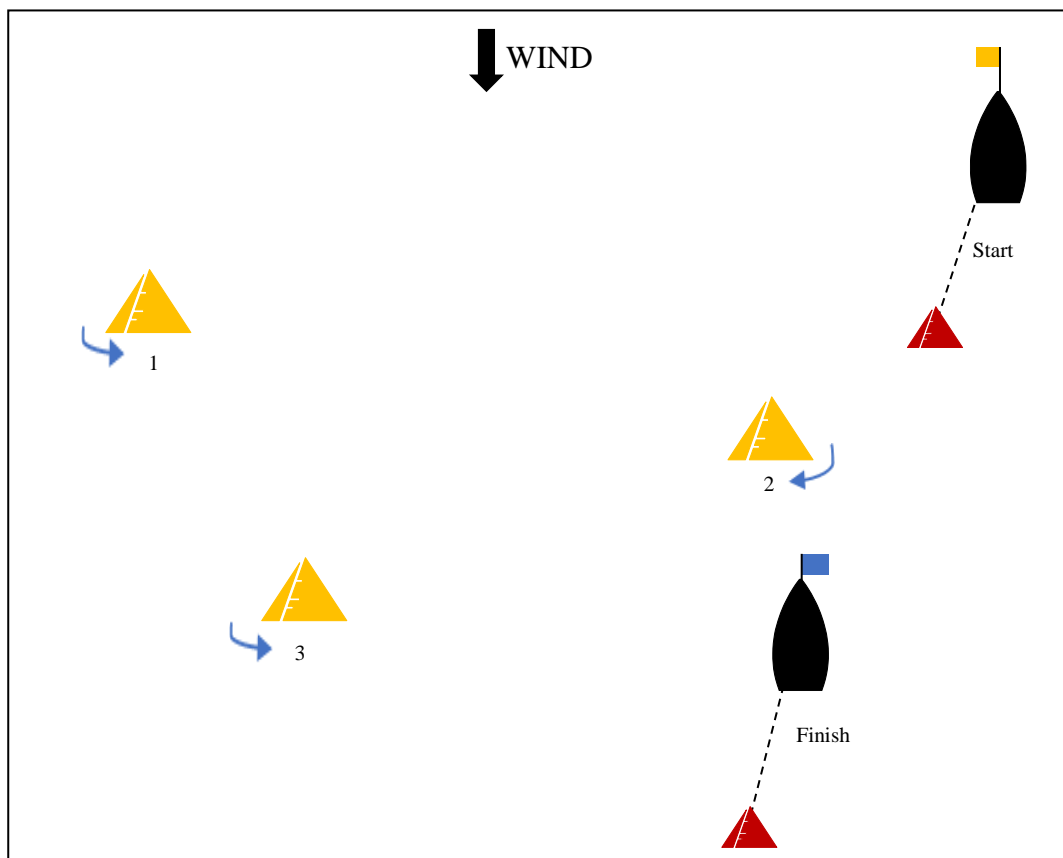
iQFOiL 7-8-9:

START – 1 – 2 – 3 – Finish.

SLALOM RACING PD3

Same as SD3 above, mirrored left-right.

**SLALOM RACING SS3
(PREFERRED IN MARGINAL CONDITIONS)**



The Start will be between a red pyramid and an orange flag on the start line vessel.

Marks 1, 2 and 3 are yellow cylinders.

Marks 1 and 3 are kept to port.

Mark 2 is kept to starboard.

Mark 1 can be extended with an additional buoy on a rope ~ 10 m leeward of Mark 1. The additional buoy shall also be kept to port.

The Finish will be between a red pyramid and a blue flag on *either* the finish line vessel or a buoy.

Rounding order:

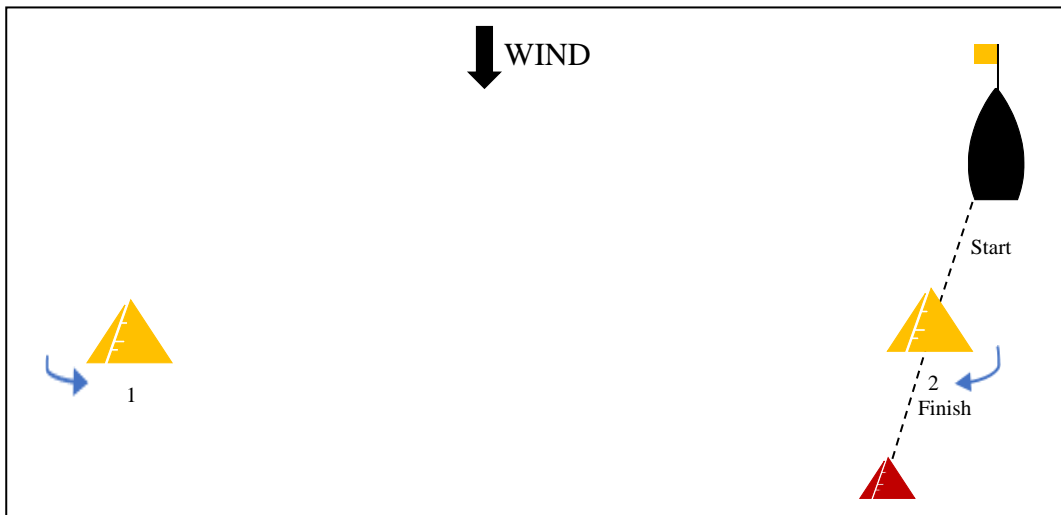
iQFOiL 7-8-9:

START – 1 – 2 – 3 – Finish.

SLALOM RACING PS3

Same as SS3 above, mirrored left-right.

SLALOM RACING SS8 (MINIMUM)



The Start will be between Mark 2 and an orange flag on the start line vessel.

Marks 1 and 2 are yellow cylinders.

Marks 1 is kept to port.

Mark 2 is kept to starboard, except when starting and finishing where it will be kept to port.

The Finish will be between Mark 2 and a red pyramid.

Rounding order:

iQFOiL 7-8-9:

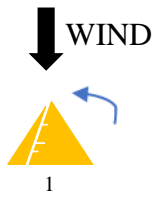
START – 1 – 2 – 1 – Finish.

SLALOM RACING PS8

Same as PS8 above, mirrored left-right.

**COURSE RACING LR2
(PREFERRED)**

8



The Start will be between a red cylinder and an orange flag on the start line vessel.

Marks 1 and 2 are yellow cylinders.

Marks 1 and 2b are kept to port.
Mark 2a is kept to starboard.

The Finish will be between a red pyramid and a blue flag on the finish line vessel.

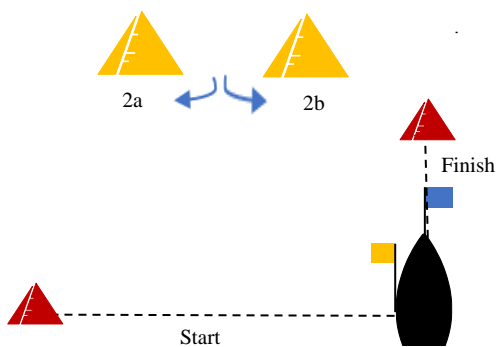
Rounding order:

iQFOiL 7-8-9

START – 1 – 2a/2b – 1 – 2a/2b – Finish.

iQFOiL 7-8-9 reduced course

START – 1 – 2a/2b – Finish.



**COURSE RACING M2
(MINIMUM)**



The Start will be between Mark 2 and an orange flag on the start line vessel.

Marks 1 and 2 are yellow cylinders.

Marks 1 is kept to port.

Mark 2 is kept to starboard.

The Finish will be between Mark 2 and a blue flag on the finish line vessel.

Rounding order:

iQFOiL 7-8-9

START – 1 – 2 – 1 – Finish.

iQFOiL 7-8-9 reduced course

START – 1 – Finish.